

Classroom
Edition

BRAIN TRAINING WITH ... THE NEW NUMBER CRUNCHERS

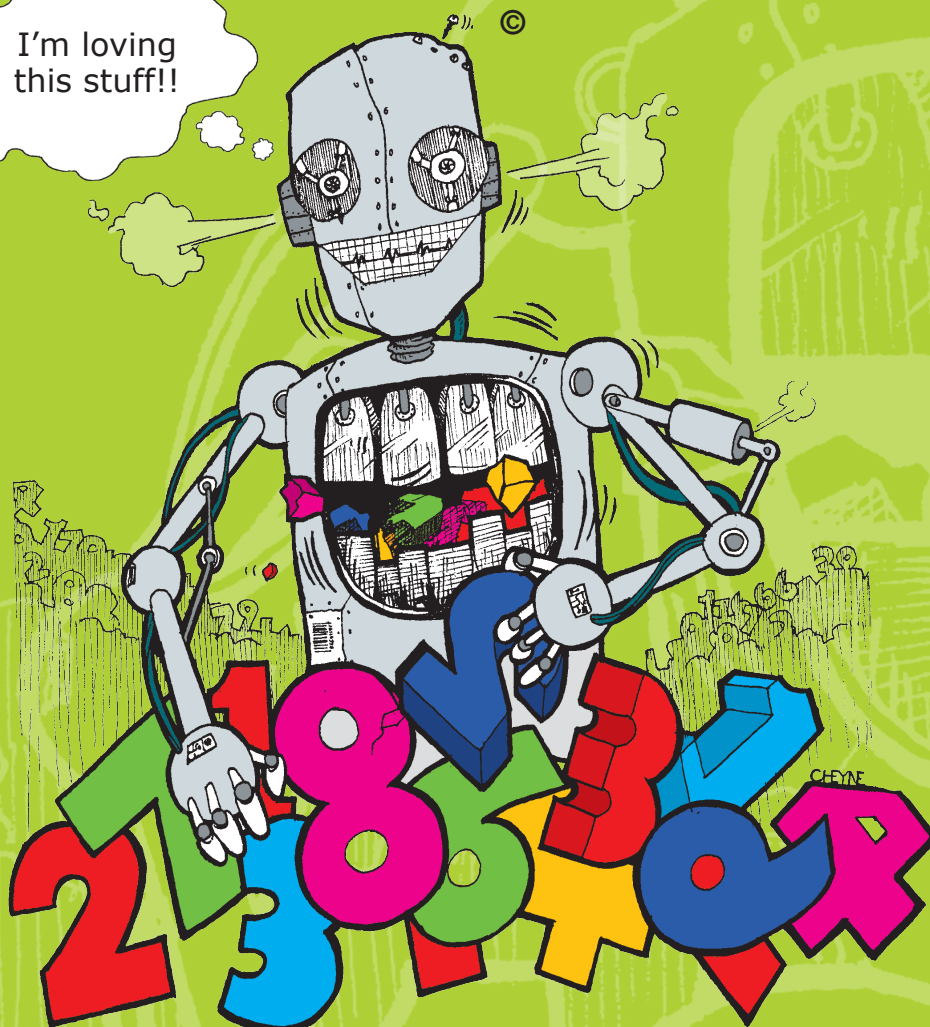
by Barry Clayton

LEVEL 3: MULTIPLYING

One Calculation - End Answers Only

(BASIC NUMBER FACTS)

I'm loving
this stuff!!



Robit McCruncher®

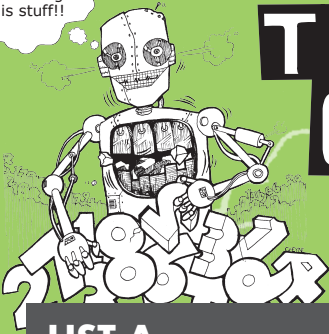
www.robitmccruncher.co.nz



**BRAINTOOLS FOR
BRAINTRAINING**

**ALL AGES,
ALL STAGES**

I'm loving
this stuff!!



THE NEW NUMBER CRUNCHERS

BASIC NUMBER FACTS

LEVEL 3: MULTIPLYING - End answers only

LEVEL 3
SET 1

LIST A

1. $3 \times 3 = \square$
2. $5 \times 0 = \square$
3. $6 \times 3 = \square$
4. $8 \times 8 = \square$
5. $0 \times 10 = \square$
6. $9 \times 9 = \square$
7. $5 \times 2 = \square$
8. $4 \times 9 = \square$
9. $9 \times 3 = \square$
10. $1 \times 1 = \square$
11. $6 \times 1 = \square$
12. $4 \times 6 = \square$
13. $0 \times 1 = \square$
14. $6 \times 5 = \square$
15. $2 \times 3 = \square$
16. $5 \times 10 = \square$
17. $8 \times 6 = \square$
18. $1 \times 9 = \square$
19. $7 \times 8 = \square$
20. $8 \times 2 = \square$

LIST B

1. $3 \times 10 = \square$
2. $2 \times 10 = \square$
3. $10 \times 5 = \square$
4. $9 \times 10 = \square$
5. $7 \times 1 = \square$
6. $10 \times 1 = \square$
7. $6 \times 4 = \square$
8. $6 \times 9 = \square$
9. $8 \times 7 = \square$
10. $0 \times 4 = \square$
11. $1 \times 0 = \square$
12. $3 \times 2 = \square$
13. $9 \times 4 = \square$
14. $3 \times 4 = \square$
15. $5 \times 7 = \square$
16. $8 \times 9 = \square$
17. $3 \times 7 = \square$
18. $2 \times 5 = \square$
19. $0 \times 8 = \square$
20. $1 \times 2 = \square$

LIST C

1. $2 \times 2 = \square$
2. $7 \times 9 = \square$
3. $10 \times 1 = \square$
4. $9 \times 8 = \square$
5. $9 \times 2 = \square$
6. $10 \times 9 = \square$
7. $1 \times 6 = \square$
8. $0 \times 2 = \square$
9. $6 \times 6 = \square$
10. $4 \times 10 = \square$
11. $0 \times 6 = \square$
12. $7 \times 3 = \square$
13. $2 \times 1 = \square$
14. $10 \times 3 = \square$
15. $4 \times 7 = \square$
16. $9 \times 6 = \square$
17. $8 \times 0 = \square$
18. $4 \times 3 = \square$
19. $7 \times 5 = \square$
20. $5 \times 1 = \square$

LIST D

1. $10 \times 0 = \square$
2. $8 \times 5 = \square$
3. $6 \times 7 = \square$
4. $3 \times 1 = \square$
5. $2 \times 0 = \square$
6. $10 \times 10 = \square$
7. $2 \times 9 = \square$
8. $6 \times 10 = \square$
9. $5 \times 8 = \square$
10. $1 \times 7 = \square$
11. $1 \times 4 = \square$
12. $10 \times 4 = \square$
13. $0 \times 7 = \square$
14. $3 \times 5 = \square$
15. $4 \times 4 = \square$
16. $2 \times 4 = \square$
17. $6 \times 2 = \square$
18. $9 \times 7 = \square$
19. $7 \times 4 = \square$
20. $3 \times 8 = \square$

LIST E

1. $10 \times 6 = \square$
2. $5 \times 3 = \square$
3. $7 \times 10 = \square$
4. $8 \times 10 = \square$
5. $4 \times 1 = \square$
6. $8 \times 8 = \square$
7. $7 \times 2 = \square$
8. $5 \times 9 = \square$
9. $0 \times 3 = \square$
10. $5 \times 5 = \square$
11. $4 \times 2 = \square$
12. $6 \times 0 = \square$
13. $4 \times 8 = \square$
14. $1 \times 8 = \square$
15. $4 \times 5 = \square$
16. $7 \times 6 = \square$
17. $1 \times 3 = \square$
18. $0 \times 9 = \square$
19. $8 \times 3 = \square$
20. $2 \times 6 = \square$

LIST F

1. $10 \times 8 = \square$
2. $8 \times 1 = \square$
3. $9 \times 5 = \square$
4. $3 \times 0 = \square$
5. $9 \times 9 = \square$
6. $9 \times 1 = \square$
7. $10 \times 7 = \square$
8. $2 \times 7 = \square$
9. $5 \times 4 = \square$
10. $8 \times 4 = \square$
11. $1 \times 5 = \square$
12. $2 \times 8 = \square$
13. $3 \times 9 = \square$
14. $6 \times 8 = \square$
15. $9 \times 0 = \square$
16. $7 \times 7 = \square$
17. $3 \times 6 = \square$
18. $10 \times 2 = \square$
19. $5 \times 6 = \square$
20. $4 \times 0 = \square$

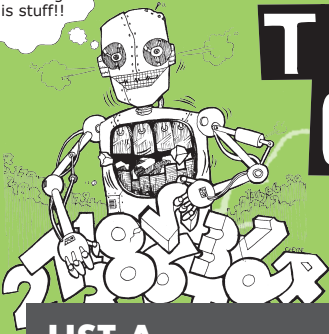


PUBLISHED IN NEW ZEALAND BY
THE OUTER EDGE LTD

© Copyright 2010 Barry Clayton

www.robitmccruncher.co.nz

I'm loving
this stuff!!



THE NEW NUMBER CRUNCHERS

BASIC NUMBER FACTS

LEVEL 3: MULTIPLYING - End answers only

LEVEL 3
SET 2

LIST A

1. $8 \times 2 = \square$
2. $7 \times 8 = \square$
3. $1 \times 9 = \square$
4. $8 \times 6 = \square$
5. $5 \times 10 = \square$
6. $2 \times 3 = \square$
7. $6 \times 5 = \square$
8. $0 \times 1 = \square$
9. $4 \times 6 = \square$
10. $6 \times 1 = \square$
11. $1 \times 1 = \square$
12. $9 \times 3 = \square$
13. $4 \times 9 = \square$
14. $5 \times 2 = \square$
15. $9 \times 9 = \square$
16. $0 \times 10 = \square$
17. $8 \times 8 = \square$
18. $6 \times 3 = \square$
19. $5 \times 0 = \square$
20. $3 \times 3 = \square$

LIST B

1. $1 \times 2 = \square$
2. $0 \times 8 = \square$
3. $2 \times 5 = \square$
4. $3 \times 7 = \square$
5. $8 \times 9 = \square$
6. $5 \times 7 = \square$
7. $3 \times 4 = \square$
8. $9 \times 4 = \square$
9. $3 \times 2 = \square$
10. $1 \times 0 = \square$
11. $0 \times 4 = \square$
12. $8 \times 7 = \square$
13. $6 \times 9 = \square$
14. $6 \times 4 = \square$
15. $10 \times 1 = \square$
16. $7 \times 1 = \square$
17. $9 \times 10 = \square$
18. $10 \times 5 = \square$
19. $2 \times 10 = \square$
20. $3 \times 10 = \square$

LIST C

1. $5 \times 1 = \square$
2. $7 \times 5 = \square$
3. $4 \times 3 = \square$
4. $8 \times 0 = \square$
5. $9 \times 6 = \square$
6. $4 \times 7 = \square$
7. $10 \times 3 = \square$
8. $2 \times 1 = \square$
9. $7 \times 3 = \square$
10. $0 \times 6 = \square$
11. $4 \times 10 = \square$
12. $6 \times 6 = \square$
13. $0 \times 2 = \square$
14. $1 \times 6 = \square$
15. $10 \times 9 = \square$
16. $9 \times 2 = \square$
17. $9 \times 8 = \square$
18. $10 \times 1 = \square$
19. $7 \times 9 = \square$
20. $2 \times 2 = \square$

LIST D

1. $3 \times 8 = \square$
2. $7 \times 4 = \square$
3. $9 \times 7 = \square$
4. $1 \times 3 = \square$
5. $2 \times 4 = \square$
6. $4 \times 4 = \square$
7. $3 \times 5 = \square$
8. $0 \times 7 = \square$
9. $10 \times 4 = \square$
10. $1 \times 4 = \square$
11. $1 \times 7 = \square$
12. $5 \times 8 = \square$
13. $6 \times 10 = \square$
14. $2 \times 9 = \square$
15. $10 \times 10 = \square$
16. $2 \times 0 = \square$
17. $3 \times 1 = \square$
18. $6 \times 7 = \square$
19. $8 \times 5 = \square$
20. $10 \times 0 = \square$

LIST E

1. $2 \times 6 = \square$
2. $8 \times 3 = \square$
3. $0 \times 9 = \square$
4. $1 \times 3 = \square$
5. $7 \times 6 = \square$
6. $4 \times 5 = \square$
7. $1 \times 8 = \square$
8. $4 \times 8 = \square$
9. $6 \times 0 = \square$
10. $4 \times 2 = \square$
11. $5 \times 5 = \square$
12. $0 \times 3 = \square$
13. $5 \times 9 = \square$
14. $7 \times 2 = \square$
15. $8 \times 8 = \square$
16. $4 \times 1 = \square$
17. $8 \times 10 = \square$
18. $7 \times 10 = \square$
19. $5 \times 3 = \square$
20. $10 \times 6 = \square$

LIST F

1. $4 \times 0 = \square$
2. $5 \times 6 = \square$
3. $10 \times 2 = \square$
4. $3 \times 6 = \square$
5. $7 \times 7 = \square$
6. $9 \times 0 = \square$
7. $6 \times 8 = \square$
8. $3 \times 9 = \square$
9. $2 \times 8 = \square$
10. $1 \times 5 = \square$
11. $8 \times 4 = \square$
12. $5 \times 4 = \square$
13. $2 \times 7 = \square$
14. $10 \times 7 = \square$
15. $9 \times 1 = \square$
16. $9 \times 9 = \square$
17. $3 \times 0 = \square$
18. $9 \times 5 = \square$
19. $8 \times 1 = \square$
20. $10 \times 8 = \square$

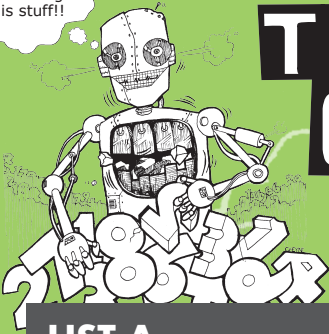


PUBLISHED IN NEW ZEALAND BY
THE OUTER EDGE LTD

© Copyright 2010 Barry Clayton

www.robitmccruncher.co.nz

I'm loving
this stuff!!



THE NEW NUMBER CRUNCHERS

BASIC NUMBER FACTS

LEVEL 3: MULTIPLYING - End answers only

LEVEL 3
SET 3

LIST A

1. $6 \times 1 = \square$
2. $4 \times 6 = \square$
3. $0 \times 1 = \square$
4. $6 \times 5 = \square$
5. $2 \times 3 = \square$
6. $5 \times 10 = \square$
7. $8 \times 6 = \square$
8. $1 \times 9 = \square$
9. $7 \times 8 = \square$
10. $8 \times 2 = \square$
11. $3 \times 3 = \square$
12. $5 \times 0 = \square$
13. $6 \times 3 = \square$
14. $8 \times 8 = \square$
15. $0 \times 10 = \square$
16. $9 \times 9 = \square$
17. $5 \times 2 = \square$
18. $4 \times 9 = \square$
19. $9 \times 3 = \square$
20. $1 \times 1 = \square$

LIST B

1. $1 \times 0 = \square$
2. $3 \times 2 = \square$
3. $9 \times 4 = \square$
4. $3 \times 4 = \square$
5. $5 \times 7 = \square$
6. $8 \times 9 = \square$
7. $3 \times 7 = \square$
8. $2 \times 5 = \square$
9. $0 \times 8 = \square$
10. $1 \times 2 = \square$
11. $3 \times 10 = \square$
12. $2 \times 10 = \square$
13. $10 \times 5 = \square$
14. $9 \times 10 = \square$
15. $7 \times 1 = \square$
16. $10 \times 1 = \square$
17. $6 \times 4 = \square$
18. $6 \times 9 = \square$
19. $8 \times 7 = \square$
20. $0 \times 4 = \square$

LIST C

1. $0 \times 6 = \square$
2. $7 \times 3 = \square$
3. $2 \times 1 = \square$
4. $10 \times 3 = \square$
5. $4 \times 7 = \square$
6. $9 \times 6 = \square$
7. $8 \times 0 = \square$
8. $4 \times 3 = \square$
9. $7 \times 5 = \square$
10. $5 \times 1 = \square$
11. $2 \times 2 = \square$
12. $7 \times 9 = \square$
13. $10 \times 1 = \square$
14. $9 \times 8 = \square$
15. $9 \times 2 = \square$
16. $10 \times 9 = \square$
17. $1 \times 6 = \square$
18. $0 \times 2 = \square$
19. $6 \times 6 = \square$
20. $4 \times 10 = \square$

LIST D

1. $1 \times 4 = \square$
2. $10 \times 4 = \square$
3. $0 \times 7 = \square$
4. $3 \times 5 = \square$
5. $4 \times 4 = \square$
6. $2 \times 4 = \square$
7. $6 \times 2 = \square$
8. $9 \times 7 = \square$
9. $7 \times 4 = \square$
10. $3 \times 8 = \square$
11. $10 \times 0 = \square$
12. $8 \times 5 = \square$
13. $6 \times 7 = \square$
14. $3 \times 1 = \square$
15. $2 \times 0 = \square$
16. $10 \times 10 = \square$
17. $2 \times 9 = \square$
18. $6 \times 10 = \square$
19. $5 \times 8 = \square$
20. $1 \times 7 = \square$

LIST E

1. $4 \times 2 = \square$
2. $6 \times 0 = \square$
3. $4 \times 8 = \square$
4. $1 \times 8 = \square$
5. $4 \times 5 = \square$
6. $7 \times 6 = \square$
7. $1 \times 3 = \square$
8. $0 \times 9 = \square$
9. $8 \times 3 = \square$
10. $2 \times 6 = \square$
11. $10 \times 6 = \square$
12. $5 \times 3 = \square$
13. $7 \times 10 = \square$
14. $8 \times 10 = \square$
15. $4 \times 1 = \square$
16. $8 \times 8 = \square$
17. $7 \times 2 = \square$
18. $5 \times 9 = \square$
19. $0 \times 3 = \square$
20. $5 \times 5 = \square$

LIST F

1. $1 \times 5 = \square$
2. $2 \times 8 = \square$
3. $3 \times 9 = \square$
4. $6 \times 8 = \square$
5. $9 \times 0 = \square$
6. $7 \times 7 = \square$
7. $3 \times 6 = \square$
8. $10 \times 2 = \square$
9. $5 \times 6 = \square$
10. $4 \times 0 = \square$
11. $10 \times 8 = \square$
12. $8 \times 1 = \square$
13. $9 \times 5 = \square$
14. $3 \times 0 = \square$
15. $9 \times 9 = \square$
16. $9 \times 1 = \square$
17. $10 \times 7 = \square$
18. $2 \times 7 = \square$
19. $5 \times 4 = \square$
20. $8 \times 4 = \square$



PUBLISHED IN NEW ZEALAND BY
THE OUTER EDGE LTD

© Copyright 2010 Barry Clayton

www.robitmccruncher.co.nz

I'm loving
this stuff!!



THE NEW NUMBER CRUNCHERS

BASIC NUMBER FACTS

LEVEL 3: MULTIPLYING - End answers only

LEVEL 3
SET 4

LIST A

1. $9 \times 9 = \square$
2. $5 \times 2 = \square$
3. $4 \times 9 = \square$
4. $9 \times 3 = \square$
5. $1 \times 1 = \square$
6. $3 \times 3 = \square$
7. $5 \times 0 = \square$
8. $6 \times 3 = \square$
9. $8 \times 8 = \square$
10. $0 \times 10 = \square$
11. $5 \times 10 = \square$
12. $8 \times 6 = \square$
13. $1 \times 9 = \square$
14. $7 \times 8 = \square$
15. $8 \times 2 = \square$
16. $6 \times 1 = \square$
17. $4 \times 6 = \square$
18. $0 \times 1 = \square$
19. $6 \times 5 = \square$
20. $2 \times 3 = \square$

LIST B

1. $10 \times 1 = \square$
2. $6 \times 4 = \square$
3. $6 \times 9 = \square$
4. $8 \times 7 = \square$
5. $0 \times 4 = \square$
6. $3 \times 10 = \square$
7. $2 \times 10 = \square$
8. $10 \times 5 = \square$
9. $9 \times 10 = \square$
10. $7 \times 1 = \square$
11. $8 \times 9 = \square$
12. $3 \times 7 = \square$
13. $2 \times 5 = \square$
14. $0 \times 8 = \square$
15. $1 \times 2 = \square$
16. $1 \times 0 = \square$
17. $3 \times 2 = \square$
18. $9 \times 4 = \square$
19. $3 \times 4 = \square$
20. $5 \times 7 = \square$

LIST C

1. $10 \times 9 = \square$
2. $1 \times 6 = \square$
3. $0 \times 2 = \square$
4. $6 \times 6 = \square$
5. $4 \times 10 = \square$
6. $2 \times 2 = \square$
7. $7 \times 9 = \square$
8. $10 \times 1 = \square$
9. $9 \times 8 = \square$
10. $9 \times 2 = \square$
11. $9 \times 6 = \square$
12. $8 \times 0 = \square$
13. $4 \times 3 = \square$
14. $7 \times 5 = \square$
15. $5 \times 1 = \square$
16. $0 \times 6 = \square$
17. $7 \times 3 = \square$
18. $2 \times 1 = \square$
19. $10 \times 3 = \square$
20. $4 \times 7 = \square$

LIST D

1. $10 \times 10 = \square$
2. $2 \times 9 = \square$
3. $6 \times 10 = \square$
4. $5 \times 8 = \square$
5. $1 \times 7 = \square$
6. $10 \times 0 = \square$
7. $8 \times 5 = \square$
8. $6 \times 7 = \square$
9. $3 \times 1 = \square$
10. $2 \times 0 = \square$
11. $2 \times 4 = \square$
12. $6 \times 2 = \square$
13. $9 \times 7 = \square$
14. $7 \times 4 = \square$
15. $3 \times 8 = \square$
16. $1 \times 4 = \square$
17. $10 \times 4 = \square$
18. $0 \times 7 = \square$
19. $3 \times 5 = \square$
20. $4 \times 4 = \square$

LIST E

1. $8 \times 8 = \square$
2. $7 \times 2 = \square$
3. $5 \times 9 = \square$
4. $0 \times 3 = \square$
5. $5 \times 5 = \square$
6. $10 \times 6 = \square$
7. $5 \times 3 = \square$
8. $7 \times 10 = \square$
9. $8 \times 10 = \square$
10. $4 \times 1 = \square$
11. $7 \times 6 = \square$
12. $1 \times 3 = \square$
13. $0 \times 9 = \square$
14. $8 \times 3 = \square$
15. $2 \times 6 = \square$
16. $4 \times 2 = \square$
17. $6 \times 0 = \square$
18. $4 \times 8 = \square$
19. $1 \times 8 = \square$
20. $4 \times 5 = \square$

LIST F

1. $9 \times 1 = \square$
2. $10 \times 7 = \square$
3. $2 \times 7 = \square$
4. $5 \times 4 = \square$
5. $8 \times 4 = \square$
6. $10 \times 8 = \square$
7. $8 \times 1 = \square$
8. $9 \times 5 = \square$
9. $3 \times 0 = \square$
10. $9 \times 9 = \square$
11. $7 \times 7 = \square$
12. $3 \times 6 = \square$
13. $10 \times 2 = \square$
14. $5 \times 6 = \square$
15. $4 \times 0 = \square$
16. $1 \times 5 = \square$
17. $2 \times 8 = \square$
18. $3 \times 9 = \square$
19. $6 \times 8 = \square$
20. $9 \times 0 = \square$



PUBLISHED IN NEW ZEALAND BY
THE OUTER EDGE LTD

© Copyright 2010 Barry Clayton

www.robitmccruncher.co.nz

I'm loving
this stuff!!



THE NEW NUMBER CRUNCHERS

BASIC NUMBER FACTS

LEVEL 3: MULTIPLYING - End answers only

LEVEL 3
SETS

LIST A

1. $6 \times 5 = \square$
2. $2 \times 3 = \square$
3. $5 \times 10 = \square$
4. $8 \times 6 = \square$
5. $1 \times 9 = \square$
6. $7 \times 8 = \square$
7. $8 \times 2 = \square$
8. $3 \times 3 = \square$
9. $5 \times 0 = \square$
10. $6 \times 3 = \square$
11. $8 \times 8 = \square$
12. $0 \times 10 = \square$
13. $9 \times 9 = \square$
14. $5 \times 2 = \square$
15. $4 \times 9 = \square$
16. $9 \times 3 = \square$
17. $1 \times 1 = \square$
18. $6 \times 1 = \square$
19. $4 \times 6 = \square$
20. $0 \times 1 = \square$

LIST B

1. $3 \times 4 = \square$
2. $5 \times 7 = \square$
3. $8 \times 9 = \square$
4. $3 \times 7 = \square$
5. $2 \times 5 = \square$
6. $0 \times 8 = \square$
7. $1 \times 2 = \square$
8. $3 \times 10 = \square$
9. $2 \times 10 = \square$
10. $10 \times 5 = \square$
11. $9 \times 10 = \square$
12. $7 \times 1 = \square$
13. $10 \times 1 = \square$
14. $6 \times 4 = \square$
15. $6 \times 9 = \square$
16. $8 \times 7 = \square$
17. $0 \times 4 = \square$
18. $1 \times 0 = \square$
19. $3 \times 2 = \square$
20. $9 \times 4 = \square$

LIST C

1. $10 \times 3 = \square$
2. $4 \times 7 = \square$
3. $9 \times 6 = \square$
4. $8 \times 0 = \square$
5. $4 \times 3 = \square$
6. $7 \times 5 = \square$
7. $5 \times 1 = \square$
8. $2 \times 2 = \square$
9. $7 \times 9 = \square$
10. $10 \times 1 = \square$
11. $9 \times 8 = \square$
12. $9 \times 2 = \square$
13. $10 \times 9 = \square$
14. $1 \times 9 = \square$
15. $0 \times 2 = \square$
16. $6 \times 6 = \square$
17. $4 \times 10 = \square$
18. $0 \times 6 = \square$
19. $7 \times 3 = \square$
20. $2 \times 1 = \square$

LIST D

1. $3 \times 5 = \square$
2. $4 \times 4 = \square$
3. $2 \times 4 = \square$
4. $6 \times 2 = \square$
5. $9 \times 7 = \square$
6. $7 \times 4 = \square$
7. $3 \times 8 = \square$
8. $10 \times 0 = \square$
9. $8 \times 5 = \square$
10. $6 \times 7 = \square$
11. $3 \times 1 = \square$
12. $2 \times 0 = \square$
13. $10 \times 10 = \square$
14. $2 \times 9 = \square$
15. $6 \times 10 = \square$
16. $5 \times 8 = \square$
17. $1 \times 7 = \square$
18. $1 \times 4 = \square$
19. $10 \times 4 = \square$
20. $0 \times 7 = \square$

LIST E

1. $1 \times 8 = \square$
2. $4 \times 5 = \square$
3. $7 \times 6 = \square$
4. $1 \times 3 = \square$
5. $0 \times 9 = \square$
6. $8 \times 3 = \square$
7. $2 \times 6 = \square$
8. $10 \times 6 = \square$
9. $5 \times 3 = \square$
10. $7 \times 10 = \square$
11. $8 \times 10 = \square$
12. $4 \times 1 = \square$
13. $8 \times 8 = \square$
14. $7 \times 2 = \square$
15. $5 \times 9 = \square$
16. $0 \times 3 = \square$
17. $5 \times 5 = \square$
18. $4 \times 2 = \square$
19. $6 \times 0 = \square$
20. $4 \times 8 = \square$

LIST F

1. $6 \times 8 = \square$
2. $9 \times 0 = \square$
3. $7 \times 7 = \square$
4. $3 \times 6 = \square$
5. $10 \times 2 = \square$
6. $5 \times 6 = \square$
7. $4 \times 0 = \square$
8. $10 \times 8 = \square$
9. $8 \times 1 = \square$
10. $9 \times 5 = \square$
11. $3 \times 0 = \square$
12. $9 \times 9 = \square$
13. $9 \times 1 = \square$
14. $10 \times 7 = \square$
15. $2 \times 7 = \square$
16. $5 \times 4 = \square$
17. $8 \times 4 = \square$
18. $1 \times 5 = \square$
19. $2 \times 8 = \square$
20. $3 \times 9 = \square$

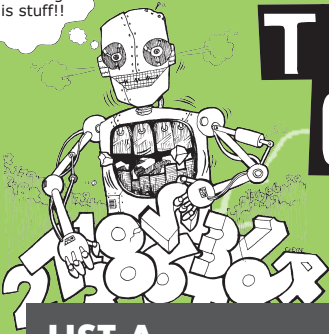


PUBLISHED IN NEW ZEALAND BY
THE OUTER EDGE LTD

© Copyright 2010 Barry Clayton

www.robitmccruncher.co.nz

I'm loving
this stuff!!



THE NEW NUMBER CRUNCHERS

BASIC NUMBER FACTS

LEVEL 3: MULTIPLYING-End answers only

LEVEL 3
SET 6

LIST A

1. $8 \times 2 = \square$
2. $7 \times 8 = \square$
3. $1 \times 9 = \square$
4. $8 \times 6 = \square$
5. $5 \times 10 = \square$
6. $2 \times 3 = \square$
7. $6 \times 5 = \square$
8. $0 \times 1 = \square$
9. $4 \times 6 = \square$
10. $6 \times 1 = \square$
11. $1 \times 1 = \square$
12. $9 \times 3 = \square$
13. $4 \times 9 = \square$
14. $5 \times 2 = \square$
15. $9 \times 9 = \square$
16. $0 \times 10 = \square$
17. $8 \times 8 = \square$
18. $6 \times 3 = \square$
19. $5 \times 0 = \square$
20. $3 \times 3 = \square$

LIST B

1. $0 \times 8 = \square$
2. $2 \times 5 = \square$
3. $3 \times 7 = \square$
4. $8 \times 9 = \square$
5. $3 \times 10 = \square$
6. $5 \times 7 = \square$
7. $3 \times 4 = \square$
8. $9 \times 4 = \square$
9. $3 \times 2 = \square$
10. $1 \times 0 = \square$
11. $0 \times 4 = \square$
12. $8 \times 7 = \square$
13. $6 \times 9 = \square$
14. $6 \times 4 = \square$
15. $10 \times 1 = \square$
16. $7 \times 1 = \square$
17. $9 \times 10 = \square$
18. $10 \times 5 = \square$
19. $2 \times 10 = \square$
20. $1 \times 2 = \square$

LIST C

1. $5 \times 1 = \square$
2. $7 \times 5 = \square$
3. $4 \times 3 = \square$
4. $8 \times 0 = \square$
5. $9 \times 6 = \square$
6. $4 \times 7 = \square$
7. $10 \times 3 = \square$
8. $2 \times 1 = \square$
9. $7 \times 3 = \square$
10. $0 \times 6 = \square$
11. $4 \times 10 = \square$
12. $6 \times 6 = \square$
13. $0 \times 2 = \square$
14. $1 \times 6 = \square$
15. $10 \times 9 = \square$
16. $9 \times 2 = \square$
17. $9 \times 8 = \square$
18. $10 \times 1 = \square$
19. $7 \times 9 = \square$
20. $2 \times 2 = \square$

LIST D

1. $3 \times 8 = \square$
2. $7 \times 4 = \square$
3. $9 \times 7 = \square$
4. $6 \times 2 = \square$
5. $2 \times 4 = \square$
6. $4 \times 4 = \square$
7. $3 \times 5 = \square$
8. $0 \times 9 = \square$
9. $10 \times 4 = \square$
10. $1 \times 4 = \square$
11. $1 \times 7 = \square$
12. $5 \times 8 = \square$
13. $6 \times 10 = \square$
14. $2 \times 9 = \square$
15. $10 \times 10 = \square$
16. $2 \times 0 = \square$
17. $3 \times 1 = \square$
18. $6 \times 7 = \square$
19. $8 \times 5 = \square$
20. $10 \times 0 = \square$

LIST E

1. $2 \times 6 = \square$
2. $8 \times 3 = \square$
3. $0 \times 9 = \square$
4. $1 \times 3 = \square$
5. $7 \times 6 = \square$
6. $4 \times 5 = \square$
7. $1 \times 8 = \square$
8. $4 \times 8 = \square$
9. $6 \times 0 = \square$
10. $4 \times 2 = \square$
11. $5 \times 5 = \square$
12. $0 \times 3 = \square$
13. $5 \times 9 = \square$
14. $7 \times 2 = \square$
15. $8 \times 8 = \square$
16. $4 \times 1 = \square$
17. $8 \times 10 = \square$
18. $7 \times 10 = \square$
19. $5 \times 3 = \square$
20. $10 \times 6 = \square$

LIST F

1. $4 \times 0 = \square$
2. $5 \times 6 = \square$
3. $10 \times 2 = \square$
4. $3 \times 6 = \square$
5. $7 \times 7 = \square$
6. $9 \times 0 = \square$
7. $6 \times 8 = \square$
8. $3 \times 9 = \square$
9. $2 \times 8 = \square$
10. $1 \times 5 = \square$
11. $8 \times 4 = \square$
12. $5 \times 4 = \square$
13. $2 \times 7 = \square$
14. $10 \times 7 = \square$
15. $9 \times 1 = \square$
16. $9 \times 9 = \square$
17. $3 \times 0 = \square$
18. $9 \times 5 = \square$
19. $8 \times 1 = \square$
20. $10 \times 8 = \square$



PUBLISHED IN NEW ZEALAND BY
THE OUTER EDGE LTD

© Copyright 2010 Barry Clayton

www.robitmccruncher.co.nz

I'm loving
this stuff!!



THE NEW NUMBER CRUNCHERS

BASIC NUMBER FACTS

LEVEL 3: MULTIPLYING - End answers only

LEVEL 3
SET 7

LIST A

1. $3 \times 3 = \square$
2. $5 \times 0 = \square$
3. $6 \times 3 = \square$
4. $8 \times 8 = \square$
5. $0 \times 10 = \square$
6. $9 \times 9 = \square$
7. $5 \times 2 = \square$
8. $4 \times 9 = \square$
9. $9 \times 3 = \square$
10. $1 \times 1 = \square$
11. $6 \times 1 = \square$
12. $4 \times 6 = \square$
13. $0 \times 1 = \square$
14. $6 \times 5 = \square$
15. $2 \times 3 = \square$
16. $5 \times 10 = \square$
17. $8 \times 6 = \square$
18. $1 \times 9 = \square$
19. $7 \times 8 = \square$
20. $8 \times 2 = \square$

LIST B

1. $1 \times 2 = \square$
2. $2 \times 10 = \square$
3. $10 \times 5 = \square$
4. $9 \times 10 = \square$
5. $7 \times 1 = \square$
6. $10 \times 1 = \square$
7. $6 \times 4 = \square$
8. $6 \times 9 = \square$
9. $8 \times 7 = \square$
10. $0 \times 4 = \square$
11. $1 \times 0 = \square$
12. $3 \times 2 = \square$
13. $9 \times 4 = \square$
14. $3 \times 4 = \square$
15. $5 \times 7 = \square$
16. $3 \times 10 = \square$
17. $8 \times 9 = \square$
18. $3 \times 7 = \square$
19. $2 \times 5 = \square$
20. $0 \times 8 = \square$

LIST C

1. $2 \times 2 = \square$
2. $7 \times 9 = \square$
3. $10 \times 1 = \square$
4. $9 \times 8 = \square$
5. $9 \times 2 = \square$
6. $10 \times 9 = \square$
7. $1 \times 6 = \square$
8. $0 \times 2 = \square$
9. $6 \times 6 = \square$
10. $4 \times 10 = \square$
11. $0 \times 6 = \square$
12. $7 \times 3 = \square$
13. $2 \times 1 = \square$
14. $10 \times 3 = \square$
15. $4 \times 7 = \square$
16. $9 \times 6 = \square$
17. $8 \times 0 = \square$
18. $4 \times 3 = \square$
19. $7 \times 5 = \square$
20. $5 \times 1 = \square$

LIST D

1. $10 \times 0 = \square$
2. $8 \times 5 = \square$
3. $6 \times 7 = \square$
4. $3 \times 1 = \square$
5. $2 \times 0 = \square$
6. $10 \times 10 = \square$
7. $2 \times 9 = \square$
8. $6 \times 10 = \square$
9. $5 \times 8 = \square$
10. $1 \times 7 = \square$
11. $1 \times 4 = \square$
12. $10 \times 4 = \square$
13. $0 \times 9 = \square$
14. $3 \times 5 = \square$
15. $4 \times 4 = \square$
16. $2 \times 4 = \square$
17. $6 \times 2 = \square$
18. $9 \times 7 = \square$
19. $7 \times 4 = \square$
20. $3 \times 8 = \square$

LIST E

1. $10 \times 6 = \square$
2. $5 \times 3 = \square$
3. $7 \times 10 = \square$
4. $8 \times 10 = \square$
5. $4 \times 1 = \square$
6. $8 \times 8 = \square$
7. $7 \times 2 = \square$
8. $5 \times 9 = \square$
9. $0 \times 3 = \square$
10. $5 \times 5 = \square$
11. $4 \times 2 = \square$
12. $6 \times 0 = \square$
13. $4 \times 8 = \square$
14. $1 \times 8 = \square$
15. $4 \times 5 = \square$
16. $7 \times 6 = \square$
17. $1 \times 3 = \square$
18. $0 \times 9 = \square$
19. $8 \times 3 = \square$
20. $2 \times 6 = \square$

LIST F

1. $10 \times 8 = \square$
2. $8 \times 1 = \square$
3. $9 \times 5 = \square$
4. $3 \times 0 = \square$
5. $9 \times 9 = \square$
6. $9 \times 1 = \square$
7. $10 \times 7 = \square$
8. $2 \times 7 = \square$
9. $5 \times 4 = \square$
10. $8 \times 4 = \square$
11. $1 \times 5 = \square$
12. $2 \times 8 = \square$
13. $3 \times 9 = \square$
14. $6 \times 8 = \square$
15. $9 \times 0 = \square$
16. $7 \times 7 = \square$
17. $3 \times 6 = \square$
18. $10 \times 2 = \square$
19. $5 \times 6 = \square$
20. $4 \times 0 = \square$

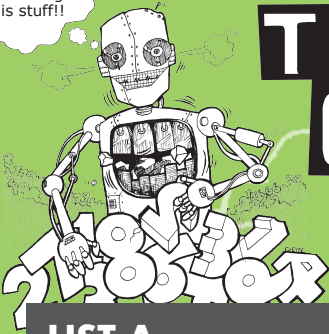


PUBLISHED IN NEW ZEALAND BY
THE OUTER EDGE LTD

© Copyright 2010 Barry Clayton

www.robitmccruncher.co.nz

I'm loving
this stuff!!



THE NEW NUMBER CRUNCHERS

BASIC NUMBER FACTS

LEVEL 3: MULTIPLYING - End answers only

LEVEL 3
SET 0

LIST A

1. $1 \times 8 = \square$
2. $9 \times 3 = \square$
3. $4 \times 9 = \square$
4. $5 \times 2 = \square$
5. $9 \times 9 = \square$
6. $0 \times 10 = \square$
7. $8 \times 8 = \square$
8. $6 \times 3 = \square$
9. $5 \times 0 = \square$
10. $3 \times 3 = \square$
11. $8 \times 2 = \square$
12. $7 \times 8 = \square$
13. $1 \times 9 = \square$
14. $8 \times 6 = \square$
15. $5 \times 10 = \square$
16. $2 \times 3 = \square$
17. $6 \times 5 = \square$
18. $0 \times 1 = \square$
19. $4 \times 6 = \square$
20. $6 \times 1 = \square$

LIST B

1. $0 \times 4 = \square$
2. $8 \times 7 = \square$
3. $6 \times 9 = \square$
4. $6 \times 4 = \square$
5. $10 \times 1 = \square$
6. $7 \times 1 = \square$
7. $9 \times 10 = \square$
8. $10 \times 5 = \square$
9. $2 \times 10 = \square$
10. $1 \times 2 = \square$
11. $0 \times 8 = \square$
12. $2 \times 5 = \square$
13. $3 \times 7 = \square$
14. $8 \times 9 = \square$
15. $3 \times 10 = \square$
16. $5 \times 7 = \square$
17. $3 \times 4 = \square$
18. $9 \times 4 = \square$
19. $3 \times 2 = \square$
20. $1 \times 0 = \square$

LIST C

1. $4 \times 10 = \square$
2. $6 \times 6 = \square$
3. $0 \times 2 = \square$
4. $1 \times 6 = \square$
5. $10 \times 9 = \square$
6. $9 \times 2 = \square$
7. $9 \times 8 = \square$
8. $10 \times 1 = \square$
9. $7 \times 9 = \square$
10. $2 \times 2 = \square$
11. $5 \times 1 = \square$
12. $7 \times 5 = \square$
13. $4 \times 3 = \square$
14. $8 \times 0 = \square$
15. $9 \times 6 = \square$
16. $4 \times 7 = \square$
17. $10 \times 3 = \square$
18. $2 \times 1 = \square$
19. $7 \times 3 = \square$
20. $0 \times 6 = \square$

LIST D

1. $1 \times 7 = \square$
2. $5 \times 8 = \square$
3. $6 \times 10 = \square$
4. $2 \times 9 = \square$
5. $10 \times 10 = \square$
6. $2 \times 0 = \square$
7. $3 \times 1 = \square$
8. $6 \times 7 = \square$
9. $8 \times 5 = \square$
10. $10 \times 0 = \square$
11. $3 \times 8 = \square$
12. $7 \times 4 = \square$
13. $9 \times 7 = \square$
14. $6 \times 2 = \square$
15. $2 \times 4 = \square$
16. $4 \times 4 = \square$
17. $3 \times 5 = \square$
18. $0 \times 9 = \square$
19. $10 \times 4 = \square$
20. $1 \times 4 = \square$

LIST E

1. $5 \times 5 = \square$
2. $0 \times 3 = \square$
3. $5 \times 9 = \square$
4. $7 \times 2 = \square$
5. $8 \times 8 = \square$
6. $4 \times 1 = \square$
7. $8 \times 10 = \square$
8. $7 \times 10 = \square$
9. $5 \times 3 = \square$
10. $10 \times 6 = \square$
11. $2 \times 6 = \square$
12. $8 \times 3 = \square$
13. $0 \times 9 = \square$
14. $1 \times 3 = \square$
15. $7 \times 6 = \square$
16. $4 \times 5 = \square$
17. $1 \times 8 = \square$
18. $4 \times 8 = \square$
19. $6 \times 0 = \square$
20. $4 \times 2 = \square$

LIST F

1. $8 \times 4 = \square$
2. $5 \times 4 = \square$
3. $2 \times 7 = \square$
4. $10 \times 7 = \square$
5. $9 \times 1 = \square$
6. $9 \times 9 = \square$
7. $3 \times 0 = \square$
8. $9 \times 5 = \square$
9. $8 \times 1 = \square$
10. $10 \times 8 = \square$
11. $4 \times 0 = \square$
12. $5 \times 6 = \square$
13. $10 \times 2 = \square$
14. $3 \times 6 = \square$
15. $7 \times 7 = \square$
16. $9 \times 0 = \square$
17. $6 \times 8 = \square$
18. $3 \times 9 = \square$
19. $2 \times 8 = \square$
20. $1 \times 5 = \square$

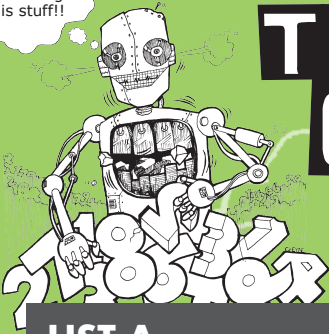


PUBLISHED IN NEW ZEALAND BY
THE OUTER EDGE LTD

© Copyright 2010 Barry Clayton

www.robitmccruncher.co.nz

I'm loving
this stuff!!



THE NEW NUMBER CRUNCHERS

BASIC NUMBER FACTS

LEVEL 3: MULTIPLYING - End answers only

LEVEL 3
SET 9

LIST A

1. $2 \times 3 = \square$
2. $6 \times 5 = \square$
3. $0 \times 1 = \square$
4. $4 \times 6 = \square$
5. $6 \times 1 = \square$
6. $8 \times 2 = \square$
7. $7 \times 8 = \square$
8. $1 \times 9 = \square$
9. $8 \times 6 = \square$
10. $5 \times 10 = \square$
11. $0 \times 10 = \square$
12. $8 \times 8 = \square$
13. $6 \times 3 = \square$
14. $5 \times 0 = \square$
15. $3 \times 3 = \square$
16. $1 \times 1 = \square$
17. $9 \times 3 = \square$
18. $4 \times 9 = \square$
19. $5 \times 2 = \square$
20. $9 \times 9 = \square$

LIST B

1. $5 \times 7 = \square$
2. $3 \times 4 = \square$
3. $9 \times 4 = \square$
4. $3 \times 2 = \square$
5. $1 \times 0 = \square$
6. $0 \times 8 = \square$
7. $2 \times 5 = \square$
8. $3 \times 7 = \square$
9. $8 \times 9 = \square$
10. $3 \times 10 = \square$
11. $7 \times 1 = \square$
12. $9 \times 10 = \square$
13. $10 \times 5 = \square$
14. $2 \times 10 = \square$
15. $1 \times 2 = \square$
16. $0 \times 4 = \square$
17. $8 \times 7 = \square$
18. $6 \times 9 = \square$
19. $6 \times 4 = \square$
20. $10 \times 1 = \square$

LIST C

1. $4 \times 7 = \square$
2. $10 \times 3 = \square$
3. $2 \times 1 = \square$
4. $7 \times 3 = \square$
5. $0 \times 6 = \square$
6. $5 \times 1 = \square$
7. $7 \times 5 = \square$
8. $4 \times 3 = \square$
9. $8 \times 0 = \square$
10. $9 \times 6 = \square$
11. $9 \times 2 = \square$
12. $9 \times 8 = \square$
13. $10 \times 1 = \square$
14. $7 \times 9 = \square$
15. $2 \times 2 = \square$
16. $4 \times 10 = \square$
17. $6 \times 6 = \square$
18. $0 \times 2 = \square$
19. $1 \times 6 = \square$
20. $10 \times 9 = \square$

LIST D

1. $4 \times 4 = \square$
2. $3 \times 5 = \square$
3. $0 \times 9 = \square$
4. $10 \times 4 = \square$
5. $1 \times 4 = \square$
6. $3 \times 8 = \square$
7. $7 \times 4 = \square$
8. $9 \times 7 = \square$
9. $6 \times 2 = \square$
10. $2 \times 4 = \square$
11. $2 \times 0 = \square$
12. $3 \times 1 = \square$
13. $6 \times 7 = \square$
14. $8 \times 5 = \square$
15. $10 \times 0 = \square$
16. $1 \times 7 = \square$
17. $5 \times 8 = \square$
18. $6 \times 10 = \square$
19. $2 \times 9 = \square$
20. $10 \times 10 = \square$

LIST E

1. $4 \times 5 = \square$
2. $1 \times 8 = \square$
3. $4 \times 8 = \square$
4. $6 \times 0 = \square$
5. $4 \times 2 = \square$
6. $2 \times 6 = \square$
7. $8 \times 3 = \square$
8. $0 \times 9 = \square$
9. $1 \times 3 = \square$
10. $7 \times 6 = \square$
11. $4 \times 1 = \square$
12. $8 \times 10 = \square$
13. $7 \times 10 = \square$
14. $5 \times 3 = \square$
15. $10 \times 6 = \square$
16. $5 \times 5 = \square$
17. $0 \times 3 = \square$
18. $5 \times 9 = \square$
19. $7 \times 2 = \square$
20. $8 \times 8 = \square$

LIST F

1. $9 \times 0 = \square$
2. $6 \times 8 = \square$
3. $3 \times 9 = \square$
4. $2 \times 8 = \square$
5. $1 \times 5 = \square$
6. $4 \times 0 = \square$
7. $5 \times 6 = \square$
8. $10 \times 2 = \square$
9. $3 \times 6 = \square$
10. $7 \times 7 = \square$
11. $9 \times 9 = \square$
12. $3 \times 0 = \square$
13. $9 \times 5 = \square$
14. $8 \times 1 = \square$
15. $10 \times 8 = \square$
16. $8 \times 4 = \square$
17. $5 \times 4 = \square$
18. $2 \times 7 = \square$
19. $10 \times 7 = \square$
20. $9 \times 1 = \square$



PUBLISHED IN NEW ZEALAND BY
THE OUTER EDGE LTD

© Copyright 2010 Barry Clayton

www.robitmccruncher.co.nz

I'm loving
this stuff!!



THE NEW NUMBER CRUNCHERS

BASIC NUMBER FACTS

LEVEL 3: MULTIPLYING - End answers only



LIST A

1. $5 \times 2 = \square$
2. $9 \times 9 = \square$
3. $0 \times 10 = \square$
4. $8 \times 8 = \square$
5. $6 \times 3 = \square$
6. $5 \times 0 = \square$
7. $3 \times 3 = \square$
8. $8 \times 2 = \square$
9. $7 \times 8 = \square$
10. $1 \times 9 = \square$
11. $8 \times 6 = \square$
12. $5 \times 10 = \square$
13. $2 \times 3 = \square$
14. $6 \times 5 = \square$
15. $0 \times 1 = \square$
16. $4 \times 6 = \square$
17. $6 \times 1 = \square$
18. $1 \times 1 = \square$
19. $9 \times 3 = \square$
20. $4 \times 9 = \square$

LIST B

1. $6 \times 4 = \square$
2. $10 \times 1 = \square$
3. $7 \times 1 = \square$
4. $9 \times 10 = \square$
5. $10 \times 5 = \square$
6. $2 \times 10 = \square$
7. $1 \times 2 = \square$
8. $0 \times 8 = \square$
9. $2 \times 5 = \square$
10. $3 \times 7 = \square$
11. $8 \times 9 = \square$
12. $3 \times 10 = \square$
13. $5 \times 7 = \square$
14. $3 \times 4 = \square$
15. $9 \times 4 = \square$
16. $3 \times 2 = \square$
17. $1 \times 0 = \square$
18. $0 \times 4 = \square$
19. $8 \times 7 = \square$
20. $6 \times 9 = \square$

LIST C

1. $1 \times 6 = \square$
2. $10 \times 9 = \square$
3. $9 \times 2 = \square$
4. $9 \times 8 = \square$
5. $10 \times 1 = \square$
6. $7 \times 9 = \square$
7. $2 \times 2 = \square$
8. $5 \times 1 = \square$
9. $7 \times 5 = \square$
10. $4 \times 3 = \square$
11. $8 \times 0 = \square$
12. $9 \times 6 = \square$
13. $4 \times 7 = \square$
14. $10 \times 3 = \square$
15. $2 \times 1 = \square$
16. $7 \times 3 = \square$
17. $0 \times 6 = \square$
18. $4 \times 10 = \square$
19. $6 \times 6 = \square$
20. $0 \times 2 = \square$

LIST D

1. $2 \times 9 = \square$
2. $10 \times 10 = \square$
3. $2 \times 0 = \square$
4. $3 \times 1 = \square$
5. $6 \times 7 = \square$
6. $8 \times 5 = \square$
7. $10 \times 0 = \square$
8. $3 \times 8 = \square$
9. $7 \times 4 = \square$
10. $9 \times 7 = \square$
11. $6 \times 2 = \square$
12. $2 \times 4 = \square$
13. $4 \times 4 = \square$
14. $3 \times 5 = \square$
15. $0 \times 9 = \square$
16. $10 \times 4 = \square$
17. $1 \times 4 = \square$
18. $1 \times 7 = \square$
19. $5 \times 8 = \square$
20. $6 \times 10 = \square$

LIST E

1. $7 \times 2 = \square$
2. $8 \times 8 = \square$
3. $4 \times 1 = \square$
4. $8 \times 10 = \square$
5. $7 \times 10 = \square$
6. $5 \times 3 = \square$
7. $10 \times 6 = \square$
8. $2 \times 6 = \square$
9. $8 \times 3 = \square$
10. $0 \times 9 = \square$
11. $1 \times 3 = \square$
12. $7 \times 6 = \square$
13. $4 \times 5 = \square$
14. $1 \times 8 = \square$
15. $4 \times 8 = \square$
16. $6 \times 0 = \square$
17. $4 \times 2 = \square$
18. $5 \times 5 = \square$
19. $0 \times 3 = \square$
20. $5 \times 9 = \square$

LIST F

1. $10 \times 7 = \square$
2. $9 \times 1 = \square$
3. $9 \times 9 = \square$
4. $3 \times 0 = \square$
5. $9 \times 5 = \square$
6. $8 \times 1 = \square$
7. $10 \times 8 = \square$
8. $4 \times 0 = \square$
9. $5 \times 6 = \square$
10. $10 \times 2 = \square$
11. $3 \times 6 = \square$
12. $7 \times 7 = \square$
13. $9 \times 0 = \square$
14. $6 \times 8 = \square$
15. $3 \times 9 = \square$
16. $2 \times 8 = \square$
17. $1 \times 5 = \square$
18. $8 \times 4 = \square$
19. $5 \times 4 = \square$
20. $2 \times 7 = \square$

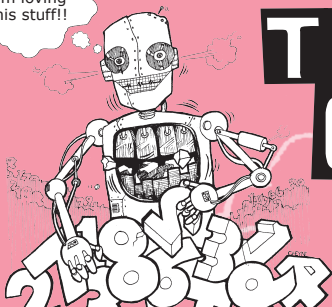


PUBLISHED IN NEW ZEALAND BY
THE OUTER EDGE LTD

© Copyright 2010 Barry Clayton

www.robitmccruncher.co.nz

I'm loving
this stuff!!



THE NEW NUMBER CRUNCHERS

BASIC NUMBER FACTS

ANSWERS FOR ALL SETS AT THIS LEVEL

LEVEL 3
ANSWERS

SET 1						
LIST						
A	B	C	D	E	F	
1	9	30	4	0	60	80
2	0	20	63	40	15	8
3	18	50	10	42	70	45
4	64	90	72	3	80	0
5	0	7	18	0	4	81
6	81	10	90	100	64	9
7	10	24	6	18	14	70
8	36	54	0	60	45	14
9	27	56	36	40	0	20
10	1	0	40	7	25	32
11	6	0	0	4	8	5
12	24	6	21	40	0	16
13	0	36	2	0	32	27
14	30	12	30	15	8	48
15	6	35	28	16	20	0
16	50	72	54	8	42	49
17	48	21	0	12	3	18
18	9	10	12	63	0	20
19	56	0	35	28	24	30
20	16	2	5	24	12	0

SET 2						
LIST						
A	B	C	D	E	F	
1	16	2	5	24	12	0
2	56	0	35	28	24	30
3	9	10	12	63	0	20
4	48	21	0	3	3	18
5	50	72	54	8	42	49
6	6	35	28	16	20	0
7	30	12	30	15	8	48
8	0	36	2	0	32	27
9	24	6	21	40	0	16
10	6	0	0	4	8	5
11	1	0	40	7	25	32
12	27	56	36	40	0	20
13	36	54	0	60	45	14
14	10	24	6	18	14	70
15	81	10	90	100	64	9
16	0	7	18	0	4	81
17	64	90	72	3	80	0
18	18	50	10	42	70	45
19	0	20	63	40	15	8
20	9	30	4	0	60	80

SET 3						
LIST						
A	B	C	D	E	F	
1	6	0	0	4	8	5
2	24	6	21	40	0	16
3	0	36	2	0	32	27
4	30	12	30	15	8	48
5	6	35	28	16	20	0
6	50	72	54	8	42	49
7	48	21	0	12	3	18
8	9	10	12	63	0	20
9	56	0	35	28	24	30
10	16	2	5	24	12	0
11	9	30	4	0	60	80
12	0	20	63	40	15	8
13	18	50	10	42	70	45
14	64	90	72	3	80	0
15	0	7	18	0	4	81
16	81	10	90	100	64	9
17	10	24	6	18	14	70
18	36	54	0	60	45	14
19	27	56	36	40	0	20
20	1	0	40	7	25	32

SET 4						
LIST						
A	B	C	D	E	F	
1	81	10	90	100	64	9
2	10	24	6	18	14	70
3	36	54	0	60	45	14
4	27	56	36	40	0	20
5	1	0	40	7	25	32
6	9	30	4	0	60	80
7	0	20	63	40	15	8
8	18	50	10	42	70	45
9	64	90	72	3	80	0
10	0	7	18	0	4	81
11	50	72	54	8	42	49
12	48	21	0	12	3	18
13	9	10	12	63	0	20
14	56	0	35	28	24	30
15	16	2	5	24	12	0
16	6	0	0	4	8	5
17	24	6	21	40	0	16
18	0	36	2	0	32	27
19	30	12	30	15	8	48
20	6	35	28	16	20	0

SET 5						
LIST						
A	B	C	D	E	F	
1	30	12	30	15	8	48
2	6	35	28	16	20	0
3	50	72	54	8	42	49
4	48	21	0	12	3	18
5	9	10	12	63	0	20
6	56	0	35	28	24	30
7	16	2	5	24	12	0
8	9	30	4	0	60	80
9	0	20	63	40	15	8
10	18	50	10	42	70	45
11	64	90	72	3	80	0
12	0	7	18	0	4	81
13	81	10	90	100	64	9
14	10	24	6	18	14	70
15	36	54	0	60	45	14
16	27	56	36	40	0	20
17	1	0	40	7	25	32
18	6	0	0	4	8	5
19	24	6	21	40	0	16
20	0	36	2	0	32	27

SET 6						
LIST						
A	B	C	D	E	F	
1	16	0	5	24	12	0
2	56	10	35	28	24	30
3	9	21	12	63	0	20
4	48	72	0	12	3	18
5	50	30	54	8	42	49
6	6	35	28	16	20	0
7	30	12	30	15	8	48
8	0	36	2	0	32	27
9	24	6	21	40	0	16
10	6	0	0	4	8	5
11	1	0	40	7	25	32
12	27	56	36	40	0	20
13	36	54	0	60	45	14
14	10	24	6	18	14	70
15	81	10	90	100	64	9
16	0	7	18	0	4	81
17	64	90	72	3	80	0
18	18	50	10	42	70	45
19	0	20	63	40	15	8
20	9	2	4	0	60	80

SET 7						
LIST						
A	B	C	D	E	F	
1	9	2	4	0	60	80
2	0	20	63	40	15	8
3	18	50	10	42	70	45
4	64	90	72	3	80	0
5	0	7	18	0	4	81
6	81	10	90	100	64	9
7	10	24	6	18	14	70
8	36	54	0	60	45	14
9	27	56	36	40	0	20
10	1	0	40	7	25	32
11	6	0	0	4	8	5
12	24	6	21	40	0	16
13	0	36	2	0	32	27
14	30	12	30	15	8	48
15	6	35	28	16	20	0
16	50	30	54	8	42	49
17	48	72	0	12	3	18
18	9	21	12	63	0	20
19	56	10	35	28	24	30
20	16	0	5	24	12	0

SET 8						
LIST						
A	B	C	D	E	F	
1	8	0	40	7	25	32
2	27	56	36	40	0	20
3	36	54	0	60	45	14
4	10	24	6	18	14	70
5	81	10	90	100	64	9
6	0	7	18	0	4	81
7	64	90	72	3	80	0
8	18	50	10	42	70	45
9	0	20	63	40	15	8
10	9	2	4	0	60	80
11	16	0	5	24	12	0
12	56	10	35	28	24	30
13	9	21	12	63	0	20
14	48	72	0	12	3	18
15	50	30	54	8	42	49
16	6	35	28	16	20	0
17	30	12	30	15	8	48
18	0	36	2	0	32	27
19	24	6	21	40	0	16
20	6	0	0	4	8	5

SET 9						
LIST						
A	B	C	D	E	F	
1	6	35	28	16	20	0
2	30	12	30	15	8	48
3	0	36	2	0	32	27
4	24	6	21	40	0	16
5	6	0	0	4	8	5
6	16	0	5	24	12	0
7	56	10	35	28	24	30
8	9	21	12	63	0	20
9	48	72	0	12	3	18
10	50	30	54	8	42	49
11	0	7	18	0	4	81
12	64	90	72	3	80	0
13	18	50	10	42	70	45
14	0	20	63	40	15	8
15	9	2	4	0	60	80
16	1	0	40	7	25	32
17	27	56	36	40	0	20
18	36	54	0	60	45	14
19	10	24	6	18	14	70
20	81	10	90	100	64	9

SET 10						
LIST						
	A	B	C	D	E	
1	10	24	6	18	14	70
2	81	10	90	100	64	9
3	0	7	18	0	4	81
4	64	90	72	3	80	0
5	18	50	10	42	70	45
6	0	20	63	40	15	8
7	9	2	4	0	60	80
8	16	0	5	24	12	0
9	56	10	35	28	24	30
10	9	21	12	63	0	20
11	48	72	0	12	3	18
12	50	30	54	8	4	10
13	6	35	28	16	20	36
14	30	12	30	15	8	9
15	0	36	2	0	32	72
16	24	6	21	40	0	48
17	6	0	0	4	8	16
18	1	0	40	7	25	5
19	27	56	36	40	0	63
20	36	54	0	60	45	100